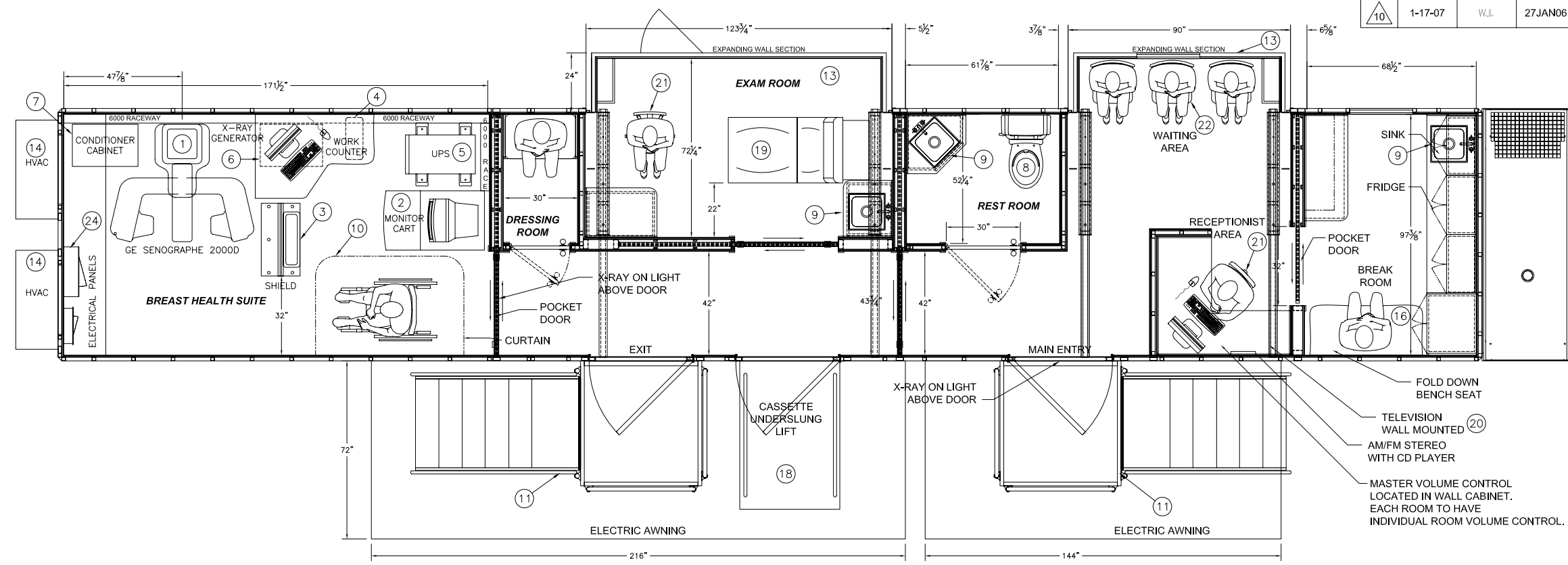
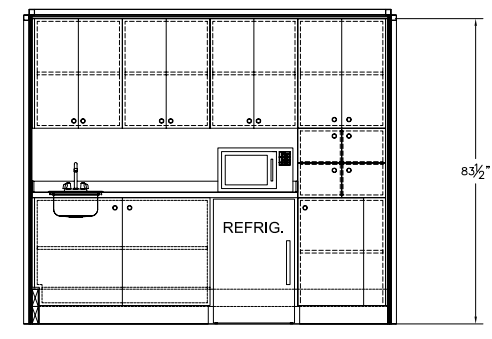


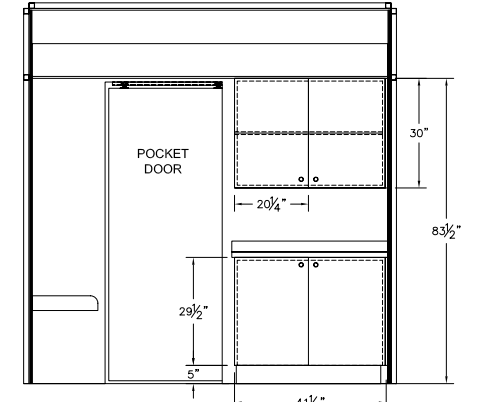
REV.	REV. DATE	CHK. BY	CHK. DATE	ENG.	REVISIONS	DESCRIPTION
10	1-17-07	W.J.	27JAN06	D.B.	CORRECTED ELEVATION VIEW LENGTH, REVISED PART. WALLS, UPDATED STRUCTURE	



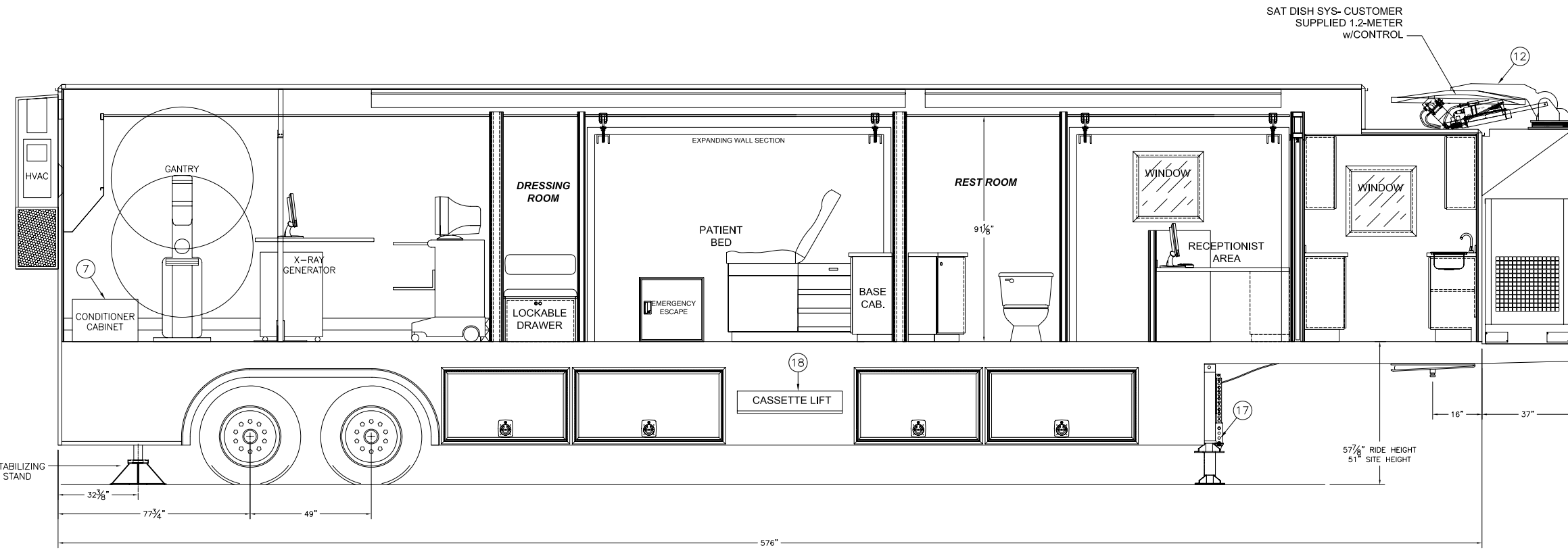
PLAN VIEW



BREAK ROOM FACING FORWARD



BREAK ROOM FACING REARWARD



ELEVATION VIEW

ITEM	QTY	PART NUMBER	DESCRIPTION
24	1		LOAD CENTER, 208-VAC, 3-PHASE
23	1		SHORE POWER CABLE, 50-FT, 208-VAC, 3-PHASE (NOT SHOWN)
22	3		CHAIR
21	2		ROLL-AROUND CHAIR
20	1		TELEVISION
19	1		EXAM TABLE
18	1		WHEELCHAIR LIFT, CASSETTE STYLE
17	2		HEAVY-DUTY HYDRAULIC LANDING LEGS
16	1		FOLD-DOWN BENCH SEAT
15	1		60-KW INDUSTRIAL GENERATOR, 208-VAC, 3-PHASE
14	2		3-TON, 208-VAC AIR CONDITIONER WITH 9-KW HEAT MINIMUM
13	2		SLIDEOUT WALL SECTION
12	1		SAT. DISH SYS.-CUSTOMER SUPP. 1.2-METER W/ CONTROL
11	2		STAIRS/PLATFORM
10	1		CURTAIN
9	3		SINK
8	1		TOILET
7	1		CONDITIONER CABINET
6	1		XRAY GENERATOR CABINET
5	1		UPS (12.5 KVA)
4	1		TDK WORKSTATION
3	1		RADIATION SHIELD & CONTROL CONSOLE
2	1		MONITOR CART
1	1		GANTRY WITH DIGITAL DETECTOR (2000D FFDM)

BILL OF MATERIALS

THIS DRAWING IS PROVIDED ON A CONFIDENTIAL BASIS SUBJECT TO RETURN ON DEMAND OF OSHKOSH SPECIALTY VEHICLES ("OSHKOSH"), WHICH RETAINS ANY AND ALL RIGHTS ASSOCIATED WITH IT AND THE ARTICLE OR ARTICLES IT REPRESENTS. DISCLOSURE, REPRODUCTION OR ALTERATION OF ANY PART OF THIS DRAWING, OR MANUFACTURE, USE OR SALE OF THE ARTICLE OR ARTICLES REPRESENTED, IS PROHIBITED WITHOUT THE PRIOR WRITTEN AUTHORIZATION OF OSHKOSH. © OSHKOSH SPECIALTY VEHICLES (unpublished).

CUSTOMER AUTHORIZATION

COMPANY NAME: _____

NAME (PRINT): _____ TITLE: _____

SIGNATURE: _____ DATE: _____

SHEET NUMBER: 1 of 1

JOB# _____

REFERENCE DRAWING: _____

TITLE: GENERAL LAYOUT
GE MEDICAL SYSTEMS 2000D MAMMOGRAPHY UNIT
8' 6" x 13' 6" x 48' 0" TRAILER

DATE: 08/05/05

SCALE: 1/2"=1'-0"

DRAWN BY: D. DeJong

CHECKED BY: _____

DRAWING NUMBER: 10272-A01

OSHKOSH SPECIALTY VEHICLES

16745 S. LATHROP AVENUE
HARVEY, IL, 60426
PHONE: (708) 596-5066
FAX: (708) 596-2480