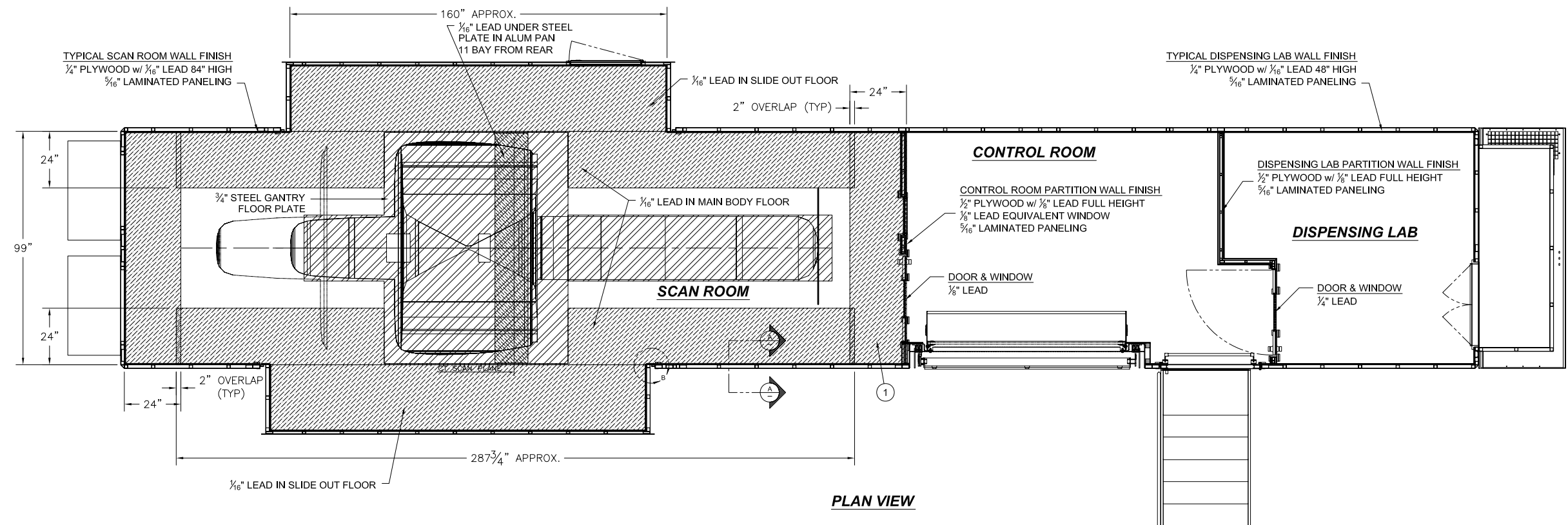
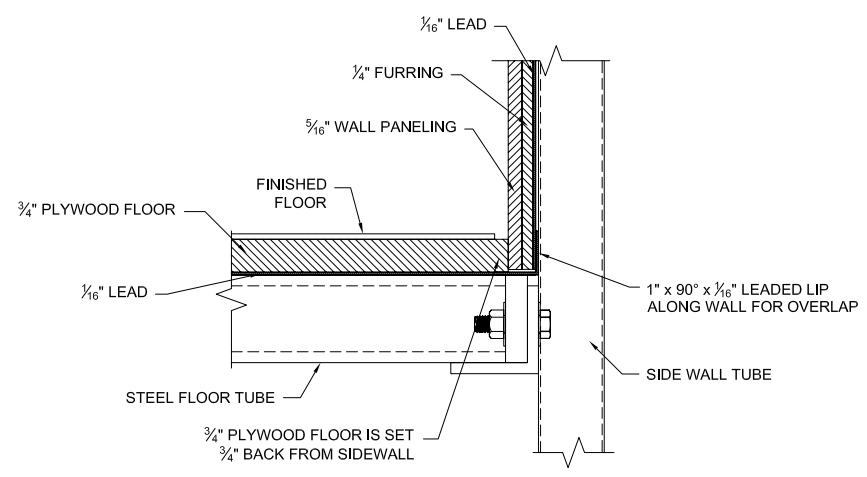


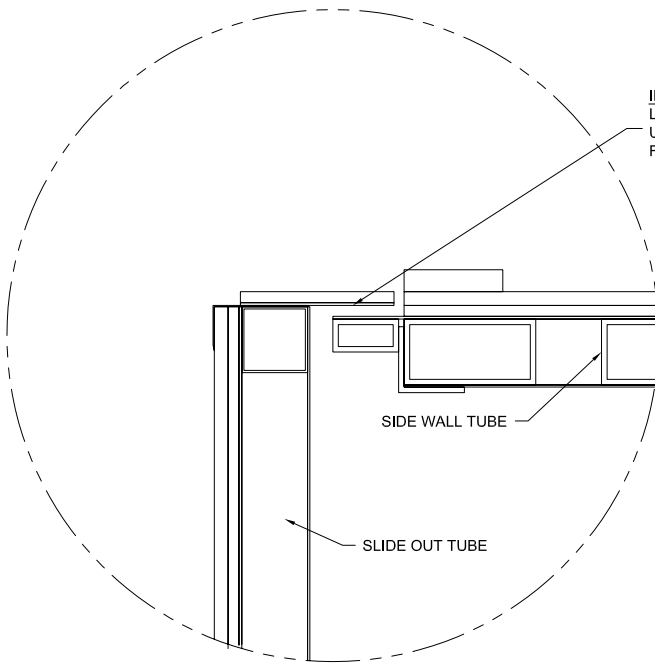
REVISIONS					DESCRIPTION
REV.	REV. DATE	CHK. BY	CHK. DATE	ENG.	
01	12/01/06	W.J.L.	12DEC06	D. BEEZHOLD	UPDATED PLAN VIEW



IMPORTANT NOTE:
 ALL WALLS IN SCAN ROOM INCLUDING EXPANDING WALL SECTIONS TO BE 1/16" LEAD LINED.
 LEAD IN SCAN ROOM WALL TO BE A MINIMUM OF 84" ABOVE FINISHED FLOOR
 ALL FLOOR, WALL AND CORNER SEAMS TO HAVE OVERLAPPING LEAD



SECTION "A-A"
 SCALE: 6"=1'-0"



DETAIL "B"
 SCALE: 6"=1'-0"

IMPORTANT NOTE:
 LEAD MATERIAL TO BE INSTALLED UNDERNEATH FINISH BAR STOCK FOR LEAD OVERLAPPING.

ITEM	QTY	PART NUMBER	DESCRIPTION
1		60090077	LEAD ROLL 1/16 X 24-1/2 X 8'

BILL OF MATERIALS

THIS DRAWING IS PROVIDED ON A CONFIDENTIAL BASIS SUBJECT TO RETURN ON DEMAND OF OSHKOSH SPECIALTY VEHICLES ("OSHKOSH"), WHICH RETAINS ANY AND ALL RIGHTS ASSOCIATED WITH IT AND THE ARTICLE OR ARTICLES IT REPRESENTS. DISCLOSURE, REPRODUCTION OR ALTERATION OF ANY PART OF THIS DRAWING OR MANUFACTURE, USE OR SALE OF THE ARTICLE OR ARTICLES REPRESENTED, IS PROHIBITED WITHOUT THE PRIOR WRITTEN AUTHORIZATION OF OSHKOSH. © OSHKOSH SPECIALTY VEHICLES (unpublished).

CUSTOMER AUTHORIZATION

COMPANY NAME: _____

NAME (PRINT): _____ TITLE: _____

SIGNATURE: _____ DATE: _____

SHEET NUMBER: SHEET 1 OF 1 REFERENCE DRAWING: 10227-A18-08 TITLE: PLAN VIEW OF LEAD REQUIREMENTS GE MEDICAL SYSTEMS DISCOVERY ST PET/CT 8'-6" x 13'-6" x 48'-0" TRAILER

DATE: 06/26/01 SCALE: 1/2"=1'-0"

DRAWN BY: _____ CHECKED BY: _____

OSHKOSH SPECIALTY VEHICLES 16745 S. LATHROP AVENUE HARVEY, IL. 60426 PHONE: (708) 596-5066 FAX: (708) 596-2480

DRAWING NUMBER: 12193-A18